



Wakatipu
HIGH SCHOOL

Wakatipu High School

QUEENSTOWN, NEW ZEALAND





E te tini e te mano, kia ora rā. Anei a whakatipu, e mihi mahana, kia koutou katoa. Takahia mai rā , ko te aroha, mai i kā rika pōwhiri, e tuwhera atu nei, ko Kawarau te mauka, ko whakatipu te roto. Haere mai rā ki tāhuna.

To the many, to the thousands - greetings. Here we are Whakatipu, a warm welcome to you all. Come forth with love, we welcome you all with open arms. Remarkables the mountain, Whakatipu the lake. Welcome again to you all.

Welcome to Wakatipu High School

Wakatipu High School is a bicultural school committed to the principles of Te Tiriti o Waitangi. We recognise and value all cultures at our school, and acknowledge the special position of Māori in New Zealand society. We work together with our Māori community to achieve the best environment for success for our ākonga.

Disclaimer: Published 20 June 2025. While every reasonable effort has been taken to ensure the information in this publication is correct at the time of print, it is subject to change at any time without notice.



Information Pack

Contents

Kia ora - Welcome	2
2024 Academic Snapshot	3
Strategic Plan	5
Ākonga Profile	6
The Wakatipu Way	7
Teaching and Learning	8
Our Modern Campus	9
Secondary Education In Queenstown	10
Community Support	12
Position Description: Teacher	14
How to Apply	16
Useful Links	16

Kia ora - Welcome

Wakatipu High School's vision is to 'deliver Aotearoa New Zealand's best all-round education'. This aspirational vision challenges us to strive to deliver the very best possible opportunities and outcomes for all of our students each and every day.

Thank you for expressing an interest in joining our extraordinary school and learning community.

Our 'Ākongā Profile' outlines what we want for our students in their time at WHS. This profile guides our teaching and pastoral care, supporting every student to gain their best possible qualification, while developing the essential competencies and knowledge for an ever-changing world, all while growing holistically as a young person. At the centre of the Profile, and integral to our daily practice, are our school values of excellence, respect, responsibility, resilience, and inclusion.

Integral to the Ākongā Profile and our vision is student engagement, learning, progress, and achievement, and our strong academic results are testament to our success in this area. Students are also supported to achieve through vocational pathways, which include our Trades Academy, Gateway, and LEAP programmes. We also offer a range of learning supports for literacy and numeracy, and boast a strong Gifted Education programme.

A key part of our all-round education, and a significant opportunity for staff involvement, is the wide range of extra and co-curricular opportunities we offer. These include sport, arts, music, culture, outdoors, community and leadership. From our rowing and jazz band to our school musical, Kapa Haka group, and Duke of Edinburgh programme, our students – guided by passionate staff – have an incredible range of opportunities to participate and excel. Furthermore,

the Wakatipu Basin's unique environment enables us to offer exceptional Outdoor Education programmes, including our Greenstone camp for Year 9 students and our iconic Branches camp for Year 10 students, where staff play a vital role in creating unforgettable experiences.

Student engagement, wellbeing and resilience are very important at WHS, and we work hard to support our students to 'feel good and function well', to enjoy coming to school, students also learn to build strategies for working through times of challenge. We have a comprehensive pastoral system, central to which are our five Houses.

Well-governed and very generously supported by the WHS Foundation and Branches Trust, Wakatipu High School is delivering on its vision to provide Aotearoa New Zealand's best all-round education. We welcome you to join us at our remarkable campus and to 'reach for your heights' at this high performing school.

Ngā Mihi,



Oded Nathan
Principal / Tumuaki



ĀKONGA PROFILE



Excellence



Respect



Responsibility



Inclusion



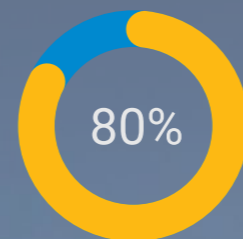
Resilience

2024 Academic Snapshot

WHS Ranked Second Nationally for University Entrance in 2024

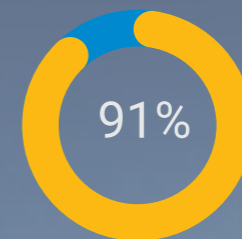
We encourage and support our students to achieve their best possible qualification. Our 2024 academic results once again placed WHS in the top 10 nationwide for all public co-educational schools across its key indicators. Notably, the school ranked second nationally among public co-ed schools for University Entrance (UE).

Our teachers focus on great teaching and learning, including differentiated instruction, and also have a focus on 'high performance', which includes Merit and Excellence endorsements and Scholarships. We also have rigorous systems for monitoring and supporting students to achieve to their heights.



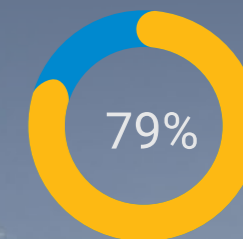
Achieved NCEA Level 1

The national average was 46% and the average for the Otago region was 70%



Achieved NCEA Level 2

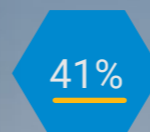
The national average was 74% and the average for the Otago region was 85%



Achieved UE

The national average was 51% and the average for the Otago region was 63%

High Performance



Achieved L1 Merit and Excellence Endorsements

The national average was 18% and the average for the Otago region was 33%



Achieved L2 Merit and Excellence Endorsements

The national average was 29% and the average for the Otago region was 39%



Achieved L3 Merit and Excellence Endorsements

The national average was 28% and the average for the Otago region was 32%



Scholarships Awarded

Top 5 in Otago region and over \$890,000 in Tertiary Scholarships awarded



Ad alta
Reach for your heights
Kā mauka whakatipu



Our vision is for Aotearoa New Zealand's best all-round education



Strategic Plan

Our Vision is for Aotearoa New Zealand's best all-round education

Our Motto is Ad Alta - Reach for your heights, Kā mauka whakatipu

The Values that guide us are:

- > Excellence - Panekiretanga
Striving to achieve our personal best, in everything we do.
- > Respect - Te whakaute
For self, others, WHS, and the environment.
- > Responsibility - Takohanga
Choosing our responses, and being accountable for our decisions, actions and consequences.
- > Resilience - Te manawanui me te ū
Being able to cope with and grow from challenge.
- > Inclusion - Kotahitanga
Actively welcoming and including all, and creating a safe environment.

Our strategic goals that we are working towards are:

Students

- Support all students to achieve the aspirations of the Ākonga Profile and to achieve their best possible qualification.
- Enable all students to participate in extra and co-curricular activities.

Staff

- Retain and recruit great staff.
- Develop inspiring leaders and teachers who deliver high quality teaching and learning.

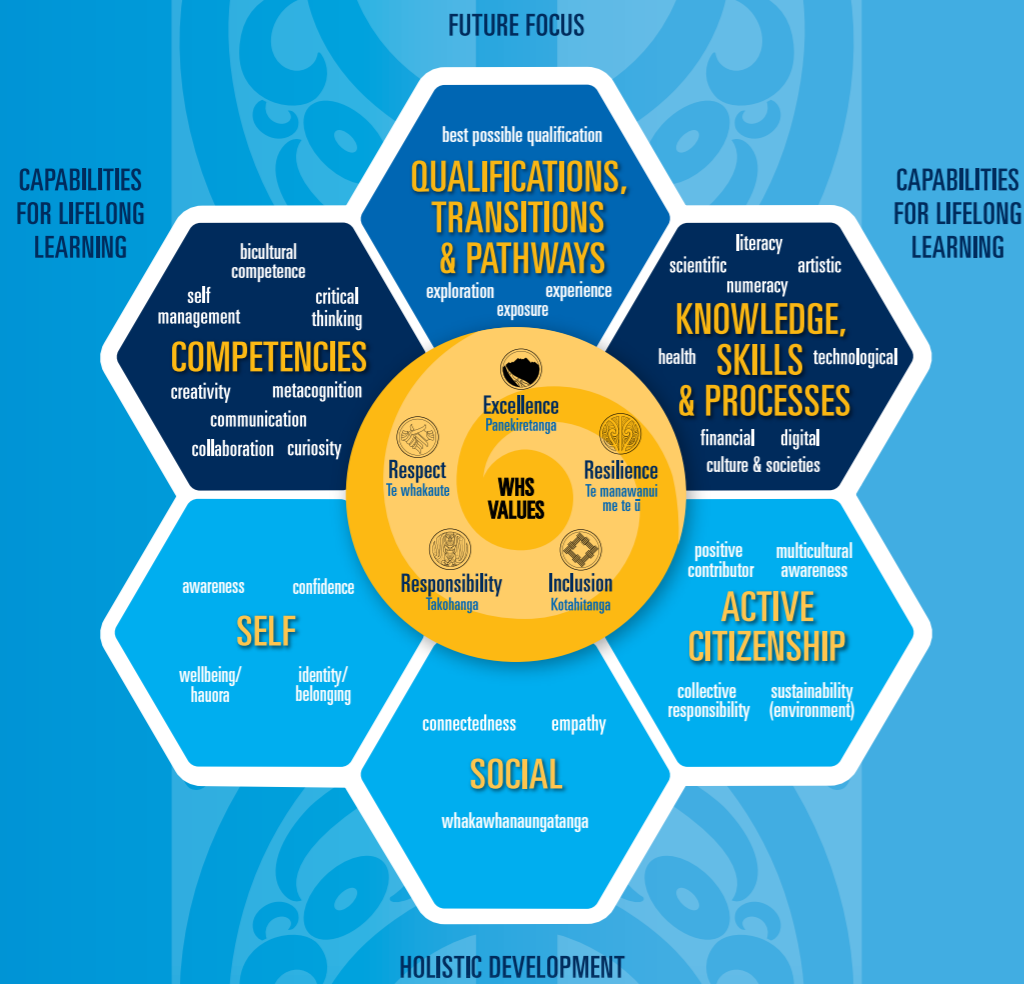
School

- Ensure a kind, safe and inclusive environment that fosters a sense of belonging.
- Embed a great school culture and the Wakatipu Way.
- Strengthen biculturalism and mātauranga Māori.
- Future proofing for growth.

Community

- Engage with the community to enhance our all-round education.
- Communicate and promote WHS to the wider community.

Ākonga Profile



Central to our vision of delivering Aotearoa New Zealand's best all-round education is our Ākonga Profile. The Ākonga (Learner) Profile outlines the areas in which we want our students to learn, develop and grow during their time at WHS. The profile is very holistic and has four key areas:

1. Values - excellence, respect, responsibility, resilience and inclusion are at the centre of the profile.
2. Future-focused qualifications, transitions and pathways - including the best possible qualification for each student.
3. Capabilities for lifelong learning - including competency development and key knowledge, skills and processes.
4. Holistic development - including self, social and active citizenship.

In Year 9, our students experience the eight learning areas of the New Zealand Curriculum, choosing subjects that allow them to explore their passions while building a strong foundation for senior school success. As students progress, they increasingly specialise within their chosen subjects and pathways. Our broad range of subject choices for both junior and senior students is designed to cater to diverse interests and needs.

We also provide comprehensive support through literacy and numeracy programmes, ESOL classes for second language learners, talent development initiatives, dedicated scholarship support, and extension and accelerated learning opportunities across all learning areas.

Aligned with our Ākonga Profile, our students also learn and grow through our wider school curriculum. Our extensive extra and co-curricular programme, which includes sports, arts, cultural activities, outdoor education, community service, and leadership opportunities, alongside our vibrant House competition, all provide valuable avenues for our ākonga to learn, grow, and develop holistically.

He waka eke noa

The Wakatipu Way

Ahakoā he iti he pounamu



Pride
Whakahi

Valuing the school and its people

• We celebrate our successes

• We represent the school positively

• We wear our school uniform correctly



Excellence
Panekiretanga

Striving to achieve our personal best, in everything we do

- > We do our best
- > We set and work towards personal goals
- > We challenge ourselves

Respect
Te whakaute

For self, others, WHS, and the environment

- > We follow instructions
- > We use appropriate language
- > We take care of our school
- > We show our thanks

Responsibility
Takohanga

Choosing our responses, and being accountable for our decisions, actions and consequences

- > We own our actions
- > We are organised and use our time well
- > We look out for others

Resilience
Te manawanui me te ū

Being able to cope with and grow from challenge

- > We believe in ourselves and others
- > We keep trying even when things are hard
- > We seek help when we need it
- > We actively manage our wellbeing

Inclusion
Kotahitanga

Actively welcoming, including all and creating a safe environment

- > We are kind and considerate
- > We listen to and value others
- > We support others to belong

Teaching and Learning

Our team of talented, passionate, and experienced staff are dedicated to ensuring there is high-quality teaching and learning at WHS, including making the most of our flexible learning environment.



Teaching and Learning Model

Our teaching and learning model outlines the guiding principles for high quality teaching and learning which are underpinned by research on what matters most for our students and their learning. These include:

- > Whakawhānaungatanga - creating a class climate and culture conducive to learning;
- > Wānanga - growing great learners who love to learn and learn to learn;
- > Kaitiakitanga - high quality teaching for equity and excellence.

The school supports staff to engage in ongoing and up-to-date professional learning to ensure students receive world-class learning experiences.

Supporting students to achieve their "Best Possible Qualification"



Our Modern Campus

Our Campus

Our world class facilities include a multi-purpose theatre space, two gymnasiums (including a double and single gym), outdoor gym circuit, specialist learning spaces, purpose built science laboratories, a musical rehearsal and a recording studio. The campus was designed and built in accordance with the principles of an Innovative Learning Environment (ILE), encompassing Flexible Learning Spaces as an integral part of learning.

The school is built for 1625 students and includes onsite student facilities such as a cafe, fitness studio, climbing wall, and outdoor basketball courts as well as student social spaces

Innovative Learning Environment

WHS's Innovative Learning Environment (ILE) provides open, flexible learning spaces, which paired with technology, enable teachers to choose from a variety of pedagogical approaches to enhance teaching and learning. They support students to develop future-focused skills and competencies for lifelong learning, while engaging in a knowledge-rich curriculum.

The flexibility of our ILE enables teachers to deliver personalised learning, better meeting the needs of individual students. Personalised learning is supported through leveraging digital technology, with students bringing their own devices to school (BYOD) and using them as tools for learning.



Wakatipu High School is more than just a place of learning, it's a space where passions are discovered, leadership is grown, and individuality is celebrated. All the challenges, opportunities, and connections have paved the way and shaped who I am today. To the future students: embrace the journey of Wakatipu, because before you know it, high school will come to an end, and you'll be heading out into the world on your own."

– Manuella Sanches Pedrosa, Head Student 2025



Secondary Education in Queenstown

Our goal is to develop students holistically. This involves participating in our vibrant community and learning to be kaitiaki of our spectacular natural environment.

As the region's sole secondary school, Wakatipu High School serves a growing cohort of over 1450 students from eight local primary schools. Our school community mirrors the broader demographic of the Wakatipu basin, encompassing a rich tapestry of ethnic and socio-economic backgrounds.

The Queenstown community has expanded in recent years attracting residents from all over the world wanting to make it their home. With a culturally rich population, we pride ourselves in having teachers and support staff who offer a diverse set of capabilities and experiences to enrich student learning.

While academic achievement is central, WHS our stunning local environment into the curriculum, offering unique learning opportunities.

The natural and cultural environment that we live in is truly unique and the teaching and learning at Wakatipu High School reflects and embraces the special character of our slice of Aotearoa New Zealand.

“Wakatipu High School is a place of growth, diversity and excellence. Our proud school community creates and supports a culture that drives students towards their potential. I feel privileged to be part of this community.”

- McKellar Thornton Head Student 2025





Community Support

Branches Trust

Branches Trust was formed in 2009 to help fund our Year 10 Branches Camp and ensure that this significant Wakatipu High School opportunity is accessible to all students and families.

With changes to education and funding over that period their very generous support remains as important as ever in supporting us to be able to run a safe, high quality Branches Camp.

Learn more about Branches Trust at branchestrust.co.nz

WHS Foundation

The WHS Foundation was established in 2013 to bring the community together to support the school in delivering a great all-round education. We are humbled by the fact that the Foundation has supported us with nearly \$3 million in that time, and very grateful for the generous support of many supportive community members and local businesses who have supported the Foundation and WHS.



The Foundation's support has provided funding for a range of initiatives including our Āwhina Support Fund, academic achievement, as well as leadership development and strategic resourcing which have enabled us to successfully deliver a great all-round education to our students as we have progressed and grown.

The Foundation and the Wakatipu community which supports it, has a real and significant impact on our students and the school.

> Learn more about the Foundation and their fundraising initiatives at whsf.nz



“ Students experience meaningful and intentional teaching, where the classroom culture is well established to support their learning.”

- 2024 Education review office (ERO) report



Position Description: Teacher

Position:	Practicing Teacher
Responsible to:	Head of Learning Area/ Senior Leadership Team
Purpose:	Fulfil the 2026 Standards of the Teaching Profession and WHS' Teaching and Learning Model to support WHS Vision for Aotearoa New Zealand's best all-round education.

Key Responsibilities

Demonstrate the values required for effective teaching:

- > Whakamana: empowering all learners to reach their highest potential by providing high-quality teaching and leadership.
- > Manaakitanga: creating a welcoming, caring and creative learning environment that treats everyone with respect and dignity.
- > Pono: showing integrity by acting in ways that are fair, honest, ethical and just.

Whanaungatanga: engaging in positive and collaborative relationships with our learners, their families and whānau, our colleagues and the wider community.

Code of Professional Responsibility:

- > Commitment to the teaching profession - Ko Te Ngākaunui Ki Te Umanga Whakaakoranga
- > Commitment to Learners - Ko Te Ngākaunui Ki Ngā Ākongā
- > Commitment To Families And Whānau - Ko Te Ngākaunui Ki Ngā Whānau
- > Commitment To Society - Ko Te Ngākaunui Ki Te Hapori Whānui

Adhere to the standards for the teaching profession as per the Teaching Council:

Continuously strive to meet the 2026 Standards of the Teaching Profession, including focus areas within each of these domains:

1. Standard 1: Te Tiriti o Waitangi partnership - Demonstrate commitment to tangata whenuatanga and Te Tiriti o Waitangi partnership in Aotearoa New Zealand
2. Standard 2: Know the content and how to teach it - Understand how to design learning based on content, curriculum, and pedagogical knowledge.
3. Standard 3: Know the learner and the learning process - Understand the learning process and the diversity of learners' strengths, needs, languages, cultures, identities, and interests.
4. Standard 4: Plan for and implement effective teaching and learning - Plan for learning, teach, and respond to learners during teaching to progress their learning at an appropriate depth and pace.
5. Standard 5: Create and maintain supportive and safe learning environments - Develop a culture where learners feel safe, have their needs met, and are focused on learning, with appropriate use of equipment and technologies.
6. Standard 6: Assess, provide feedback, and report on learning - Use regular and consistent assessment to inform teaching and share information on learner progress.
7. Standard 7: Engage in professional learning - Improve professional capability through evidence-based reflection, professional learning, and engagement with colleagues.
8. Standard 8: Engage in productive professional relationships - Work constructively with colleagues, parents/caregivers, and the community to support the learning and wellbeing of each learner.

For more details and for any updates to the above please refer to the Teaching Council.

Continuously strive to meet the WHS High Quality Teaching and Learning Model:

- > Kaitiakitanga: High-quality teaching for equity and excellence:
 - Know the student
 - Know what to teach
 - Know how to teach it
 - Know it has been learnt
- > Wānanga: Growing great learners who love to learn and learn to learn
 - Curiosity
 - Engagement
 - Confidence
 - Resilience
 - Connection (self)
 - Self-Management
 - Collaboration
 - Critical & Creative Thinking
 - Metacognition
 - Connection (world)
- > Whakawhanaungatanga: Creating a class climate and culture conducive to learning
 - Care and Connectedness
 - Challenge
 - Consistency

Comply with the policies and procedures and code of conduct as set out by the Wakatipu High School Board of Trustees.

Note: *The above statements are intended to describe the general nature and level of work being performed by people assigned to this classification. They are not to be construed as an exhaustive list of all responsibilities, duties, and skills required of personnel so classified. All personnel may be required to perform any reasonable and lawful duties outside of their normal responsibilities from time to time, as requested by their line manager.*



How to Apply

Please submit your application online by visiting the following link:
<https://wakatipuh.schooljobs.nz/>

Applications will be electronically acknowledged, and further correspondence may be by email.

Useful Links

About Us

- wakatipu.school.nz/our-school

Strategic Plan

- wakatipu.school.nz/our-school

News

- wakatipu.school.nz/school-news

School Contacts

- wakatipu.school.nz/our-staff

ERO Report

- ero.govt.nz/institution/374/wakatipu-high-school

WHS Foundation

- whsf.nz

Branches Trust

- branchestrust.co.nz

 @wakatipuhighschoolqueenstown



 @wakatipuhighschool



Our cultural pattern was designed by the Maui design studio in consultation with our Rūnaka, Ōraka-Aparima. The resulting work is a tāonga - a treasure for the school. The cultural pattern incorporate four key elements: Poutama (various steps of learning and achievement), Koru (growth), Manu Feathers (cultural diversity) and Manaia (representing kaitiakitanga/guardianship).



Wakatipu High School
47-49 Red Oaks Drive,
Frankton, Queenstown 9300
office@wakatipu.school.nz
03-442 7370
wakatipu.school.nz

 : @wakatipuhighschoolqueenstown
 : @wakatipuhighschool